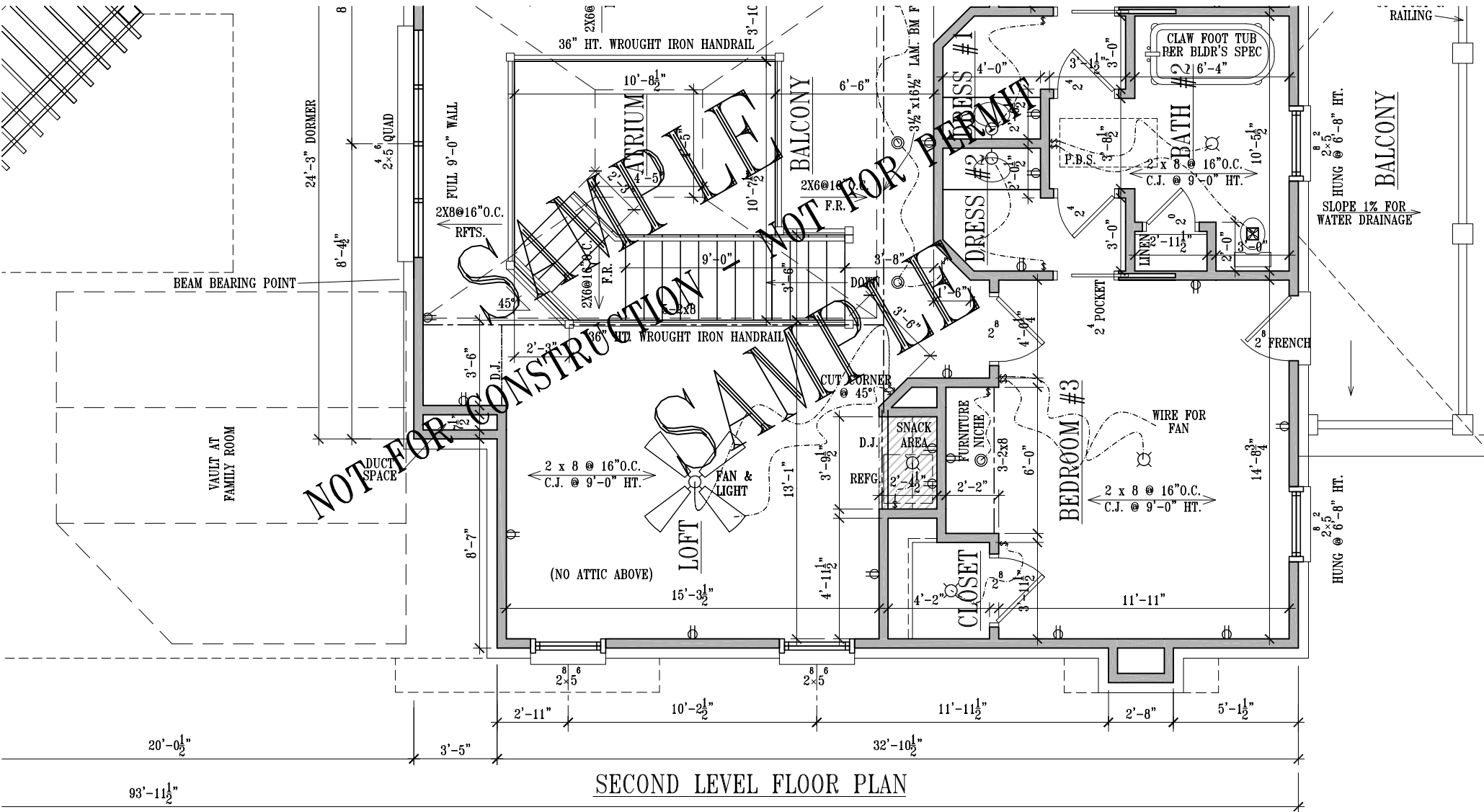




FRONT ELEVATION
NOT TO SCALE

*ACTUAL SIZE MAY VARY DEPENDING ON PLAN

TYPICAL SCALE: 1/4" = 1'-0"

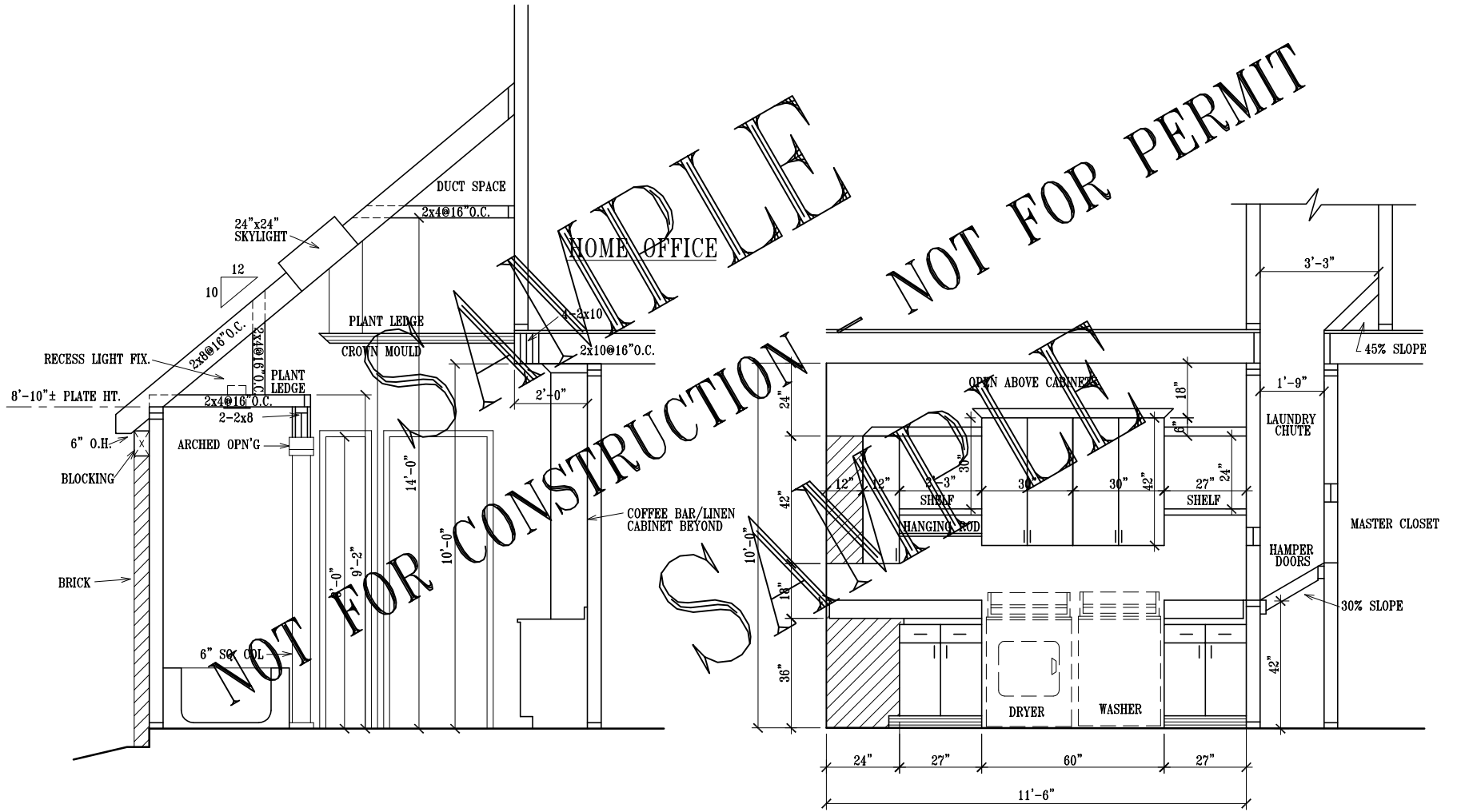


SECOND LEVEL FLOOR PLAN

NOT TO SCALE

*ACTUAL SIZE MAY VARY DEPENDING ON PLAN

TYPICAL SCALE: 1/4" = 1'-0"



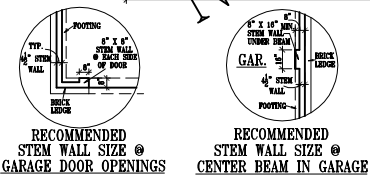
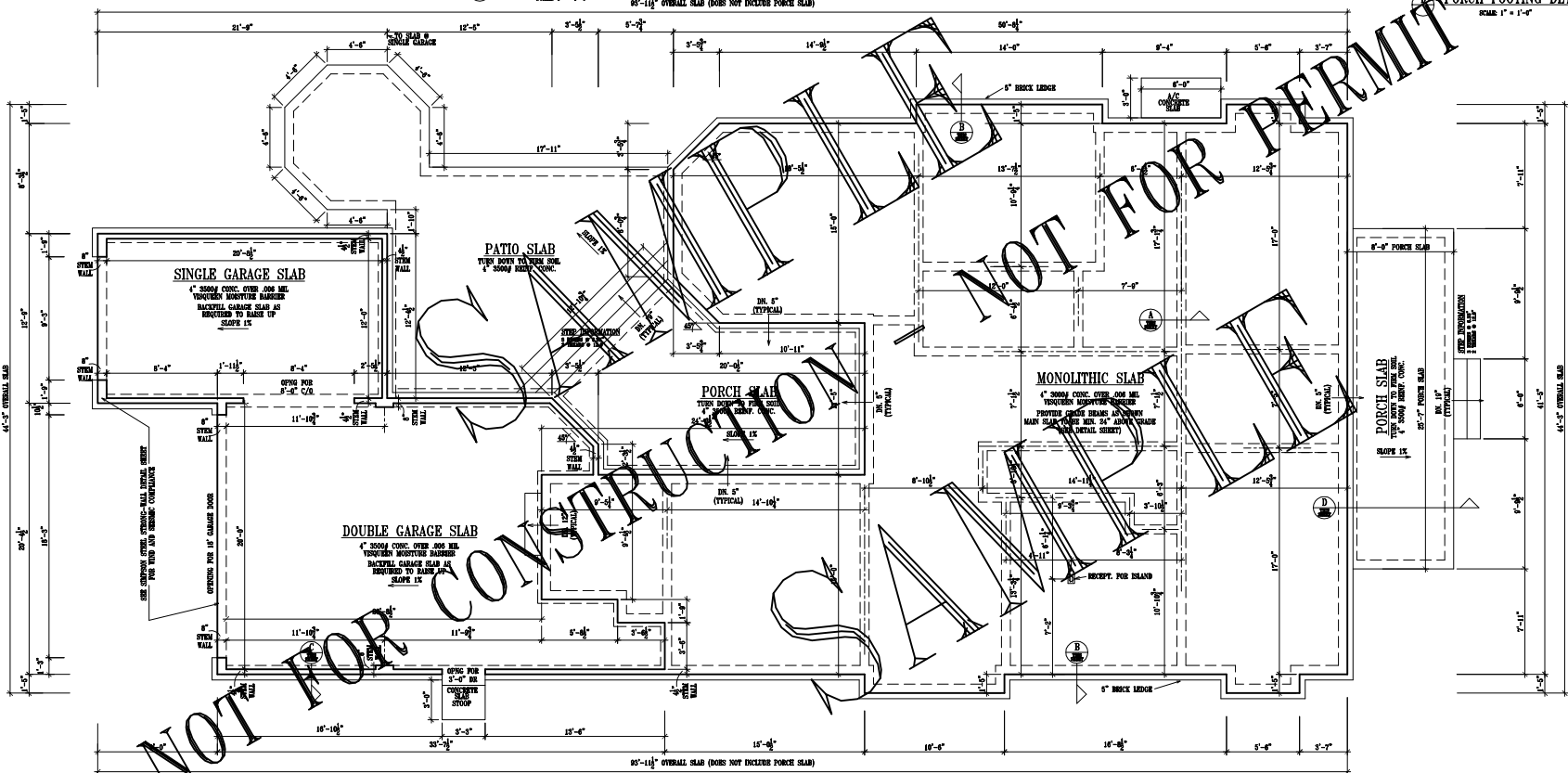
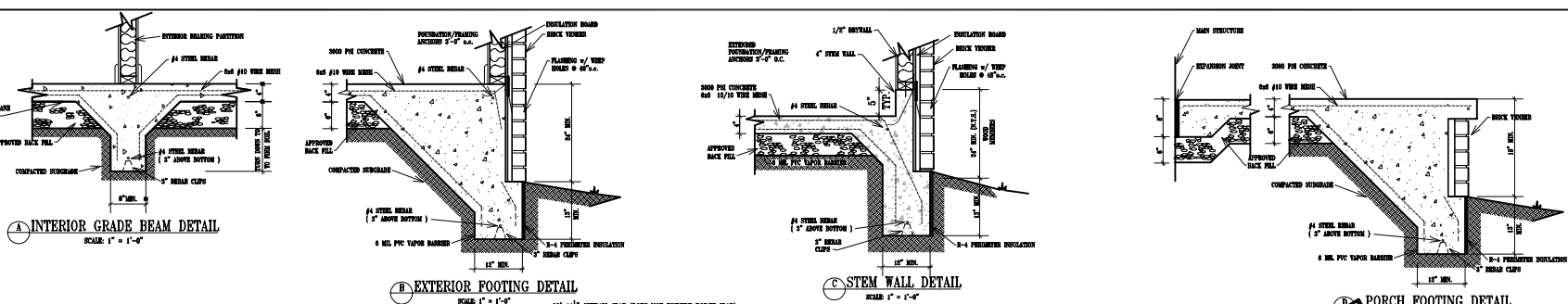
FRAMING SECTION @ MASTER BATH
NOT TO SCALE

UTILITY CABINET DETAILS
NOT TO SCALE

*ACTUAL SIZE MAY VARY DEPENDING ON PLAN

TYPICAL SCALE: 3/8" = 1'-0"

MURPHY/TEAN SLABER / WESTVIEW HOMES

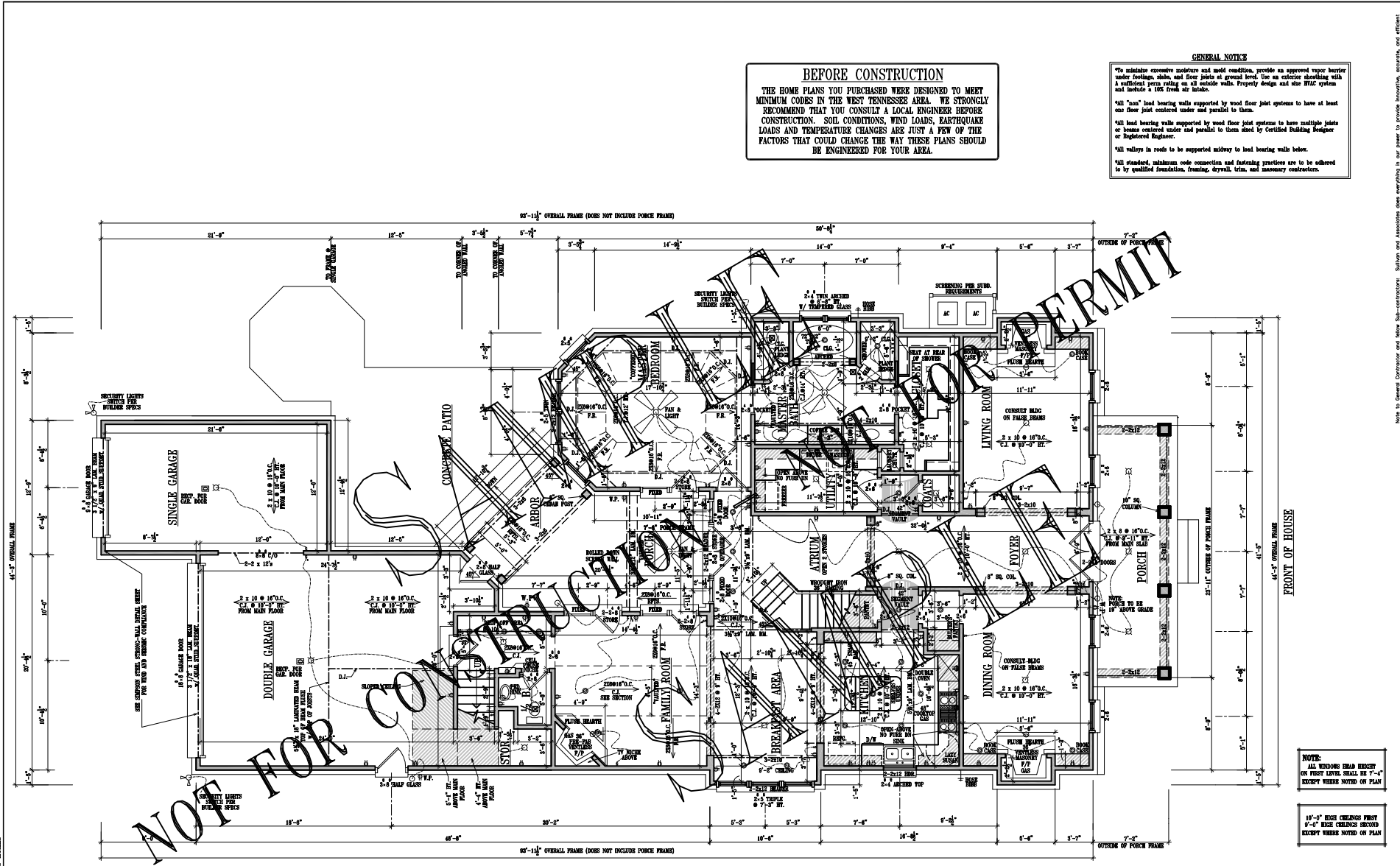


Note to General Contractor and fellow Sub-contractors: Sullivan and Associates does everything in our power to provide accurate, complete, and sufficient information in our drawings. It is the responsibility of the contractor to verify all information in the drawings. If the contractor has any questions or needs clarification, they should contact the architect immediately. It is the contractor's responsibility to obtain all necessary permits and approvals from the appropriate authorities. The contractor shall be responsible for all construction details not shown on the drawings.

DESIGNED FOR: **Sullivan & Associates**
2320 Commonwealth Road 2100
Glenview, IL 60045
PH: 847-235-8800
WWW.SULLIVAN-AND-ASSOCIATES.COM

CREATIVE CONCEPTS BY: **Sullivan & Associates**
ARCHITECTURE: **ARCHITECTURE**
STRUCTURE: **STRUCTURE**
MECHANICAL: **MECHANICAL**
ELECTRICAL: **ELECTRICAL**
PLUMBING: **PLUMBING**
LANDSCAPE: **LANDSCAPE**

© 2007 SULLIVAN & ASSOCIATES
REPRODUCED OR TRANSMITTED IN ANY FORM OR BY ANY MEANS WITHOUT PERMISSION IS STRICTLY PROHIBITED.
DATE: 08/14/07
SHEET NO. 2169-2007-1312-T



FIRST LEVEL FLOOR PLAN
SCALE: 1/4" = 1'-0"

BEFORE CONSTRUCTION
THE HOME PLANS YOU PURCHASED WERE DESIGNED TO MEET MINIMUM CODES IN THE WEST TENNESSEE AREA. WE STRONGLY RECOMMEND THAT YOU CONSULT A LOCAL ENGINEER BEFORE CONSTRUCTION. SOIL CONDITIONS, WIND LOADS, EARTHQUAKE LOADS AND TEMPERATURE CHANGES ARE JUST A FEW OF THE FACTORS THAT COULD CHANGE THE WAY THESE PLANS SHOULD BE ENGINEERED FOR YOUR AREA.

GENERAL NOTES
*To minimize excessive moisture and mold conditions, provide an approved vapor barrier under footings, slabs, and floor joists at ground level. Use an exterior sheathing with a nailable perimeter on all outside walls. Properly design and size RMC system and include a 10% fresh air intake.
**All "non" load bearing walls supported by wood floor joist systems to have at least one floor joist centered under and parallel to them.
***All load bearing walls supported by wood floor joist systems to have multiple joists or beams centered under and parallel to them. Steel by Certified Building Designer or Registered Engineer.
****All valleys in roofs to be supported midway to load bearing walls below.
*****All standard, aluminum code connection and fastening practices are to be adhered to by qualified foundation, framing, drywall, trim, and masonry contractors.

NOTE:
ALL WINDOWS SHALL BE SET ON FIRST LEVEL SHALL BE 7'-0" EXCEPT WHERE NOTED ON PLAN
10'-0" HIGH CHANGES FIRST
9'-0" HIGH CHANGES SECOND
EXCEPT WHERE NOTED ON PLAN

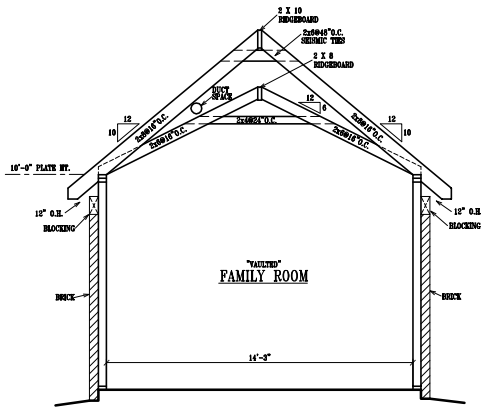
SQUARE FOOTAGE

2208	HEATED DOWN
1210	HEATED UP (WITHOUT ABOVE GARAGE)
577	HEATED UP (ABOVE GARAGE)
847	GARAGE & STORAGE
465	FRONT & REAR PORCHES AND BALCONY
3418	TOTAL HEATED AREA (WITHOUT ABOVE GARAGE)
4285	TOTAL HEATED AREA (WITH ABOVE GARAGE)
5142	TOTAL ENCLOSED AREA
5607	TOTAL SQUARE FOOTAGE

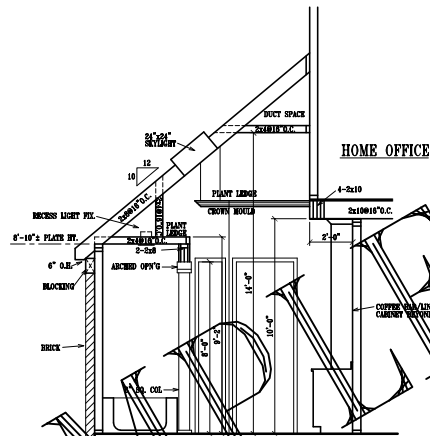
IF THIS HOME PLAN SHOWS A DOOR OR WINDOW OPENING CLOSER THAN 4'-0" TO ANY EXTERIOR CORNER AND A 10'-0" WIDE PATIOOR SEALSATION CANNOT BE PLACED WITHIN 6" OF CORNER, USE APPROVED MANUFACTURED WALL PANEL SUCH AS SHEKSON STRONG WALL OR EQUAL.

Notes to General Contractor and Sub-contractors: Sullivan and Associates does not warrant, in any way, to provide drawings, accounts, and efficient construction. It is the responsibility of the contractor to verify all dimensions, materials, and methods of construction. It is the contractor's responsibility to obtain all necessary permits, licenses, and approvals from the appropriate authorities. The contractor shall be responsible for all construction costs not included in the contract price. The contractor shall be responsible for all construction costs not included in the contract price. The contractor shall be responsible for all construction costs not included in the contract price.

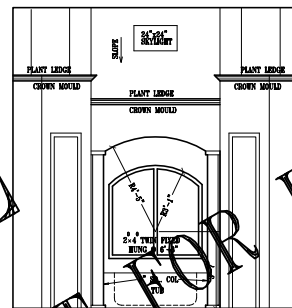
DESIGNED FOR: _____
 SHEET: **2**
 PLAN NO.: 2169-2087-1312-T
 2320 Germantown Road, Suite 200, Memphis, TN 38117
 Phone: (901) 255-8888
 Fax: (901) 255-8889
 Website: www.sullivanandassociates.com



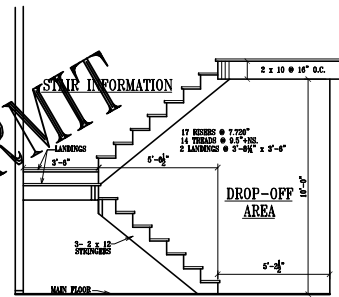
FRAMING SECTION @ FAMILY ROOM
SCALE: 3/8" = 1'-0"



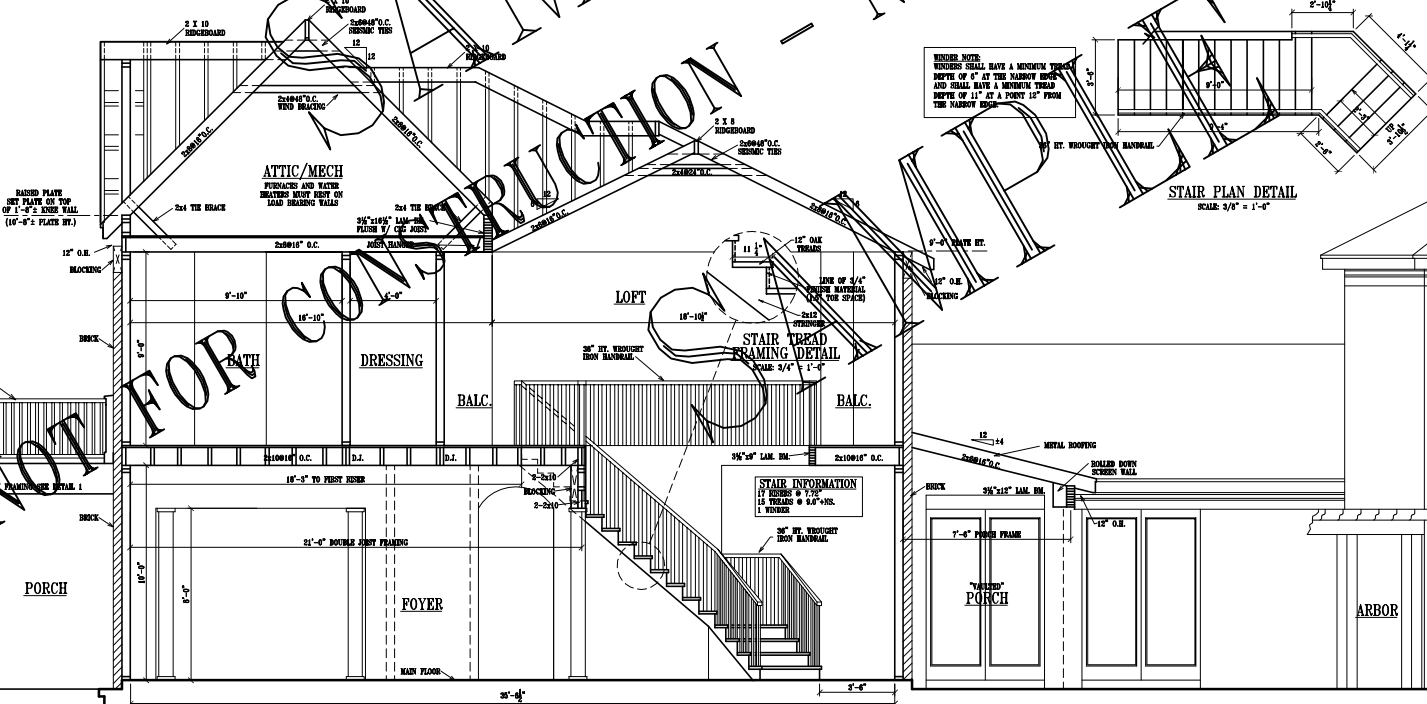
FRAMING SECTION @ MASTER BATH
SCALE: 3/8" = 1'-0"



ELEVATION @ MASTER BATH
SCALE: 3/8" = 1'-0"



REAR STAIR DETAIL
SCALE: 3/8" = 1'-0"



FRAMING SECTION @ MAIN BODY
SCALE: 3/8" = 1'-0"

NOT FOR PERMIT

NOT FOR CONSTRUCTION

Note to General Contractor and other Sub-contractors: Sullivan and Associates does not warrant, nor does it provide, engineering, accounting, and other professional services. It is the responsibility of the contractor to obtain all necessary permits and approvals. It is the contractor's responsibility to ensure that all work is done in accordance with all applicable codes and regulations. The contractor shall be responsible for obtaining all necessary permits and approvals.

11-04	BRICK BALCONY	JOHN A.	ARCHITECT
11-04	BRICK BALCONY	JOHN A.	ARCHITECT
11-04	BRICK BALCONY	JOHN A.	ARCHITECT
11-04	BRICK BALCONY	JOHN A.	ARCHITECT
11-04	BRICK BALCONY	JOHN A.	ARCHITECT
11-04	BRICK BALCONY	JOHN A.	ARCHITECT
11-04	BRICK BALCONY	JOHN A.	ARCHITECT
11-04	BRICK BALCONY	JOHN A.	ARCHITECT
11-04	BRICK BALCONY	JOHN A.	ARCHITECT
11-04	BRICK BALCONY	JOHN A.	ARCHITECT

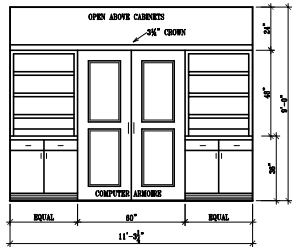
2320 Greenwood Road 2100
 Glenview, IL 60025
 (847) 735-8800
 www.sullivanandassociates.com



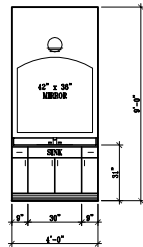
DESIGNED FOR: _____
 PLAN NO. 2169-2087-1312-T
 SHEET 4

© COPYRIGHT 2007, SULLIVAN & ASSOCIATES.
 FEDERAL OFFENSE TO COPY, REPRODUCE OR USE THIS DESIGN ON LOCATIONS OTHER THAN THE PAID LOCATIONS.

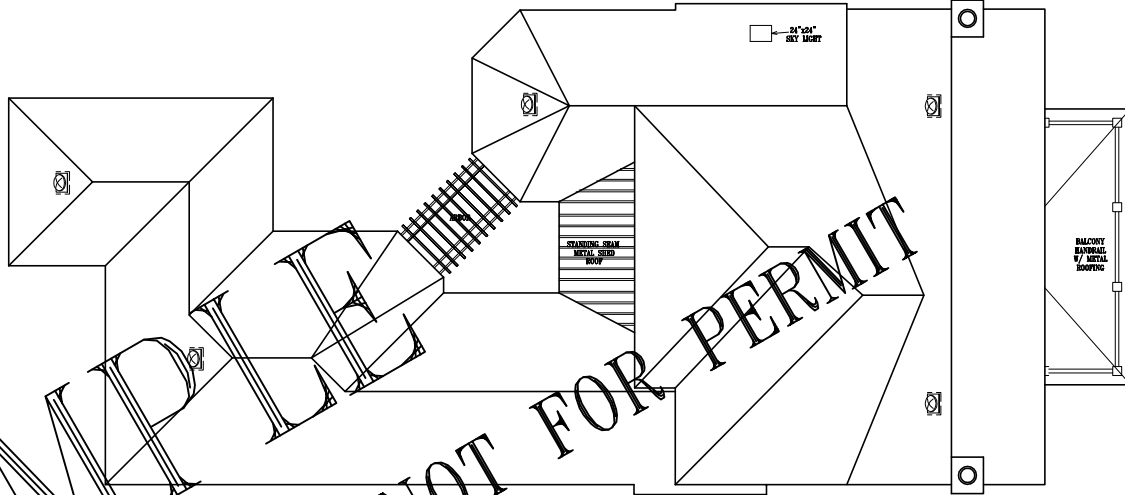
MURPHY/TEAN ELAHER / WESTVIEW HOMES



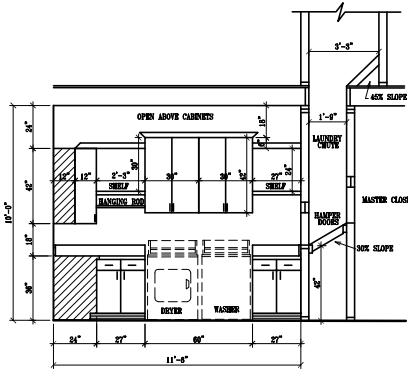
HOME OFFICE CABINET DETAILS
SCALE: 3/8" = 1'-0"



DRESSING AREA #1 & #2
SCALE: 3/8" = 1'-0"

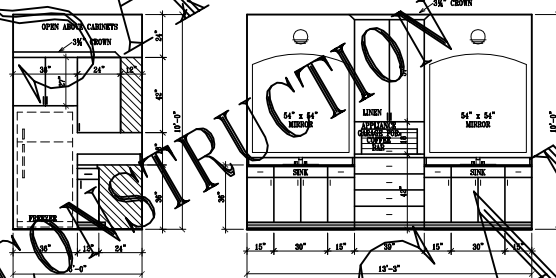


ROOF PLAN
SCALE: 3/16" = 1'-0"

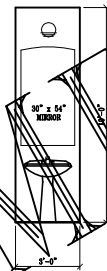


UTILITY CABINET DETAILS
SCALE: 3/16" = 1'-0"

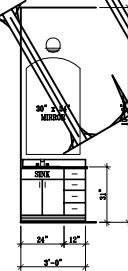
SAMPLE - NOT FOR PERMIT
CONSTRUCTION - SAMPLE



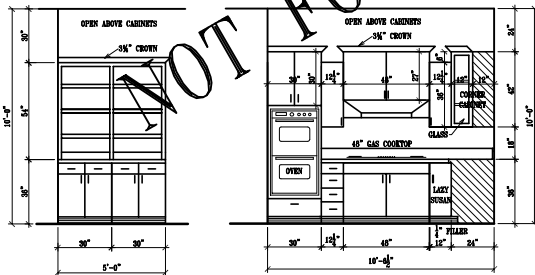
MASTER BATH CABINET DETAILS
SCALE: 3/8" = 1'-0"



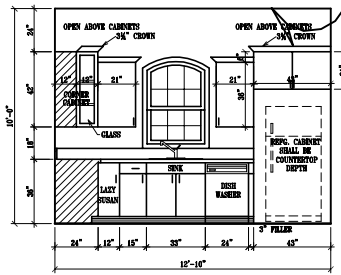
1/2 BATH
SCALE: 3/8" = 1'-0"



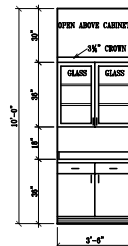
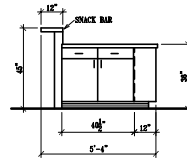
BATH #3
SCALE: 3/8" = 1'-0"



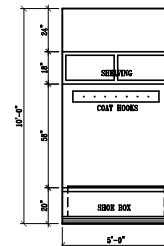
KITCHEN CABINET DETAILS
SCALE: 3/8" = 1'-0"



KITCHEN ISLAND CABINET DETAILS
SCALE: 3/8" = 1'-0"



BUTLERS PANTRY
SCALE: 3/8" = 1'-0"



DROP OFF AREA
SCALE: 3/8" = 1'-0"

Note to General Contractor and fellow Sub-contractors: Sullivan and Associates does everything in its power to provide accurate, complete, and efficient drawings. However, it is the responsibility of the contractor to verify all information, including but not limited to, dimensions, materials, and construction methods, before construction begins. The contractor shall be responsible for obtaining all necessary permits and for ensuring that all work complies with applicable codes and regulations. The contractor shall be responsible for obtaining all necessary approvals and for ensuring that all work is completed in a timely and efficient manner.

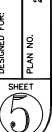
2320 Dominion Road 2100
 Norfolk, VA 23502
 (757) 255-8800
 www.sullivanandassociates.com

& Associates
 creative concepts in home designs



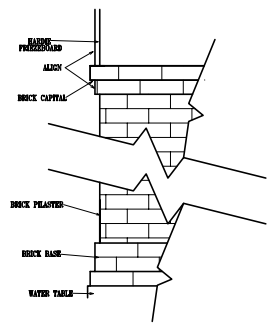
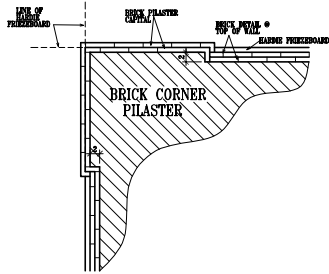
NO.	DESCRIPTION	DATE
1-01	ISSUE FOR PERMIT	11-14-07
1-02	REVISION	11-14-07
1-03	REVISION	11-14-07
1-04	REVISION	11-14-07
1-05	REVISION	11-14-07
1-06	REVISION	11-14-07
1-07	REVISION	11-14-07
1-08	REVISION	11-14-07
1-09	REVISION	11-14-07
1-10	REVISION	11-14-07

DESIGNED FOR: 2169-2007-1312-T
 SHEET

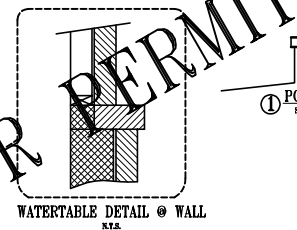
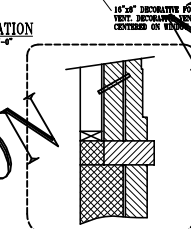
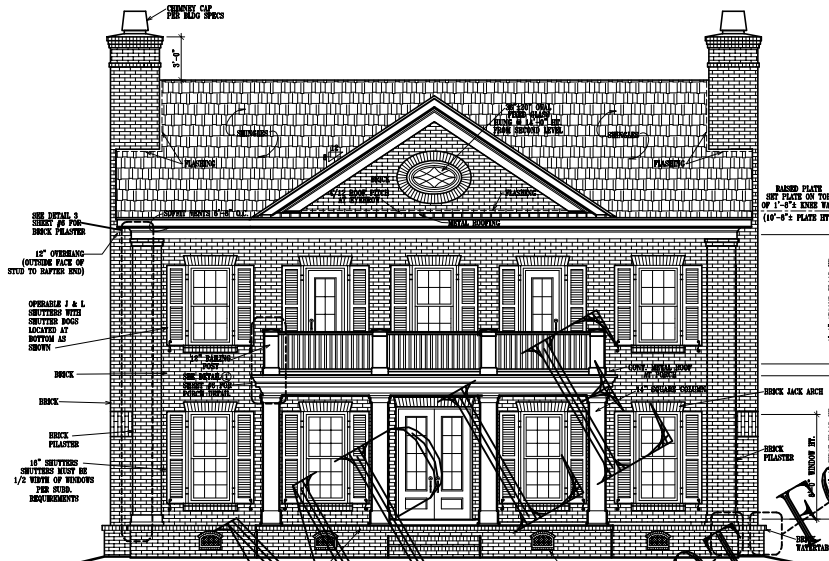


2169-2007-1312-T
 SHEET

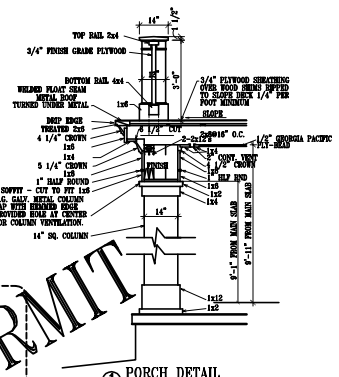
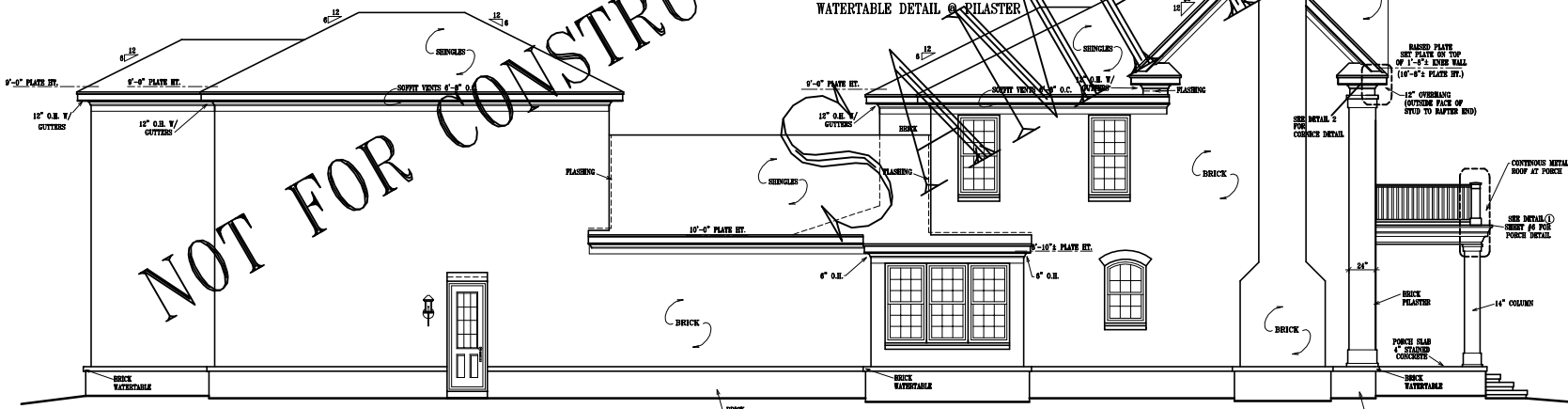
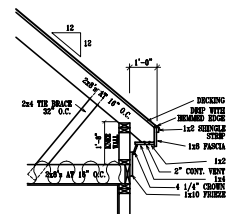
MURPHY/TEEN ELAGER / WESTVIEW HOMES



③ BRICK PILASTER DETAIL
K.T.S.



NOTE:
ALL BRICK MUST SET ON
BRICK OR OTHER FIRM CORE
FOR DOUBLED COURSES, USE
3 1/2" x 3 1/2" x 1 1/4" ANGLE IRON
(PER CODE) TO SUPPORT BRICK
FOR BASE COURSES, USE
1 1/2" x 1 1/2" STEEL PLATE PLAYS
BETWEEN DOUBLED 2x8 RAPERS



SAMPLE NOT FOR CONSTRUCTION

Note to General Contractor and other Sub-contractors: Sullivan and Associates does not warrant, in any way, for the accuracy, completeness, and sufficiency of the information provided herein. It is the responsibility of the user to verify the information provided herein. If the user is not a professional engineer, architect, or contractor, the user is advised that the use of this information is at their own risk. The user is advised that the use of this information is at their own risk. The user is advised that the use of this information is at their own risk.

DESIGNED FOR: **6**
 SHEET NO. **6**
 PLAN NO. **2169-2087-1312-T**
 © COPYRIGHT 2007, SULLIVAN & ASSOCIATES, INC.
 FEDERAL OFFENSE TO COPY, REPRODUCE OR USE THIS DESIGN ON LOCATIONS OTHER THAN THE PAID LOCATIONS.
 CREATIVE CONCEPTS BY: **Sullivan & Associates**
 2320 Commonwealth Road 5100
 (978) 255-8888
 WWW.SULLIVAN-PA.COM

20. STAIRS:

Table with columns: Stair, Material, Thickness, Spacing, Material, Size, Material, Size, Material, Size. Includes rows for Rise, Tread, and Additional Information.

21. SPECIAL FLOORS AND MAINSCOT:

Table with columns: Location, Material, Color, Finish, Size, Material, Size, Material, Size, Material, Size. Includes rows for Stairs, Landing, and Floor.

Additional information: _____; number: _____; material: _____; size: _____.

22. PLUMBING:

Table with columns: Fixture, Number, Location, Make, Model, Material, Size, Color, Other. Includes rows for Sink, Water closet, and Shower.

23. HEATING, CONSULT LOCAL MECHANICAL ENGINEER:

Water: _____; Heating: _____; Cooling: _____; Ventilation: _____.

25. LIGHTING FIXTURES:

Additional information: _____; Material: _____; Type: _____.

26. INSULATION:

Roof: _____; Ceiling: _____; Walls: _____; Floors: _____.

27. MECHANICALS:

Additional information: _____; Material: _____; Size: _____.

28. EXCAVATION:

Excavation details: _____; Depth: _____; Location: _____.

29. FOUNDATIONS:

Foundation details: _____; Material: _____; Size: _____.

30. CHIMNEYS:

Chimney details: _____; Material: _____; Height: _____.

31. FIREPLACES:

Fireplace details: _____; Material: _____; Size: _____.

32. EXTERIOR WALLS:

Exterior wall details: _____; Material: _____; Thickness: _____.

33. FLOOR FRAMING:

Floor framing details: _____; Material: _____; Size: _____.

34. SUBFLOORING:

Subflooring details: _____; Material: _____; Thickness: _____.

35. FINISH FLOORING:

Finish flooring details: _____; Material: _____; Thickness: _____.

36. PARTITION FRAMING:

Partition framing details: _____; Material: _____; Thickness: _____.

37. CEILING FRAMING:

Ceiling framing details: _____; Material: _____; Thickness: _____.

38. ROOF FRAMING:

Roof framing details: _____; Material: _____; Thickness: _____.

39. ROOFING:

Roofing details: _____; Material: _____; Thickness: _____.

40. CUTTERS AND DOWNSPOUTS:

Cutters and downspouts details: _____; Material: _____; Size: _____.

41. LATH AND PLASTER:

Lath and plaster details: _____; Material: _____; Thickness: _____.

42. DECORATING:

Decorating details: _____; Material: _____; Thickness: _____.

43. INTERIOR DOORS AND TRIM:

Interior doors and trim details: _____; Material: _____; Thickness: _____.

44. WINDOWS:

Window details: _____; Material: _____; Thickness: _____.

45. ENTRANCES AND EXTERIOR DETAIL:

Entrances and exterior detail details: _____; Material: _____; Thickness: _____.

46. CABINETS AND INTERIOR DETAIL:

Cabinets and interior detail details: _____; Material: _____; Thickness: _____.

47. MECHANICALS:

Mechanicals details: _____; Material: _____; Thickness: _____.

48. STAIRS:

Stairs details: _____; Material: _____; Thickness: _____.

49. SPECIAL FLOORS AND MAINSCOT:

Special floors and mairnscoat details: _____; Material: _____; Thickness: _____.

50. PLUMBING:

Plumbing details: _____; Material: _____; Thickness: _____.

51. HEATING, CONSULT LOCAL MECHANICAL ENGINEER:

Heating details: _____; Material: _____; Thickness: _____.

52. LIGHTING FIXTURES:

Lighting fixtures details: _____; Material: _____; Thickness: _____.

53. INSULATION:

Insulation details: _____; Material: _____; Thickness: _____.

54. MECHANICALS:

Mechanicals details: _____; Material: _____; Thickness: _____.

55. EXCAVATION:

Excavation details: _____; Material: _____; Thickness: _____.

56. FOUNDATIONS:

Foundations details: _____; Material: _____; Thickness: _____.

57. CHIMNEYS:

Chimneys details: _____; Material: _____; Thickness: _____.

58. FIREPLACES:

Fireplaces details: _____; Material: _____; Thickness: _____.

59. EXTERIOR WALLS:

Exterior walls details: _____; Material: _____; Thickness: _____.

60. FLOOR FRAMING:

Floor framing details: _____; Material: _____; Thickness: _____.

61. SUBFLOORING:

Subflooring details: _____; Material: _____; Thickness: _____.

62. FINISH FLOORING:

Finish flooring details: _____; Material: _____; Thickness: _____.

63. PARTITION FRAMING:

Partition framing details: _____; Material: _____; Thickness: _____.

64. CEILING FRAMING:

Ceiling framing details: _____; Material: _____; Thickness: _____.

65. ROOF FRAMING:

Roof framing details: _____; Material: _____; Thickness: _____.

66. ROOFING:

Roofing details: _____; Material: _____; Thickness: _____.

67. CUTTERS AND DOWNSPOUTS:

Cutters and downspouts details: _____; Material: _____; Thickness: _____.

68. LATH AND PLASTER:

Lath and plaster details: _____; Material: _____; Thickness: _____.

69. DECORATING:

Decorating details: _____; Material: _____; Thickness: _____.

70. INTERIOR DOORS AND TRIM:

Interior doors and trim details: _____; Material: _____; Thickness: _____.

71. WINDOWS:

Window details: _____; Material: _____; Thickness: _____.

72. ENTRANCES AND EXTERIOR DETAIL:

Entrances and exterior detail details: _____; Material: _____; Thickness: _____.

73. CABINETS AND INTERIOR DETAIL:

Cabinets and interior detail details: _____; Material: _____; Thickness: _____.

74. MECHANICALS:

Mechanicals details: _____; Material: _____; Thickness: _____.

75. STAIRS:

Stairs details: _____; Material: _____; Thickness: _____.

76. SPECIAL FLOORS AND MAINSCOT:

Special floors and mairnscoat details: _____; Material: _____; Thickness: _____.

77. PLUMBING:

Plumbing details: _____; Material: _____; Thickness: _____.

78. HEATING, CONSULT LOCAL MECHANICAL ENGINEER:

Heating details: _____; Material: _____; Thickness: _____.

79. LIGHTING FIXTURES:

Lighting fixtures details: _____; Material: _____; Thickness: _____.

80. INSULATION:

Insulation details: _____; Material: _____; Thickness: _____.

81. MECHANICALS:

Mechanicals details: _____; Material: _____; Thickness: _____.

82. EXCAVATION:

Excavation details: _____; Material: _____; Thickness: _____.

83. FOUNDATIONS:

Foundations details: _____; Material: _____; Thickness: _____.

84. CHIMNEYS:

Chimneys details: _____; Material: _____; Thickness: _____.

85. FIREPLACES:

Fireplaces details: _____; Material: _____; Thickness: _____.

86. EXTERIOR WALLS:

Exterior walls details: _____; Material: _____; Thickness: _____.

87. FLOOR FRAMING:

Floor framing details: _____; Material: _____; Thickness: _____.

88. SUBFLOORING:

Subflooring details: _____; Material: _____; Thickness: _____.

89. FINISH FLOORING:

Finish flooring details: _____; Material: _____; Thickness: _____.

90. PARTITION FRAMING:

Partition framing details: _____; Material: _____; Thickness: _____.

91. CEILING FRAMING:

Ceiling framing details: _____; Material: _____; Thickness: _____.

92. ROOF FRAMING:

Roof framing details: _____; Material: _____; Thickness: _____.

93. ROOFING:

Roofing details: _____; Material: _____; Thickness: _____.

94. CUTTERS AND DOWNSPOUTS:

Cutters and downspouts details: _____; Material: _____; Thickness: _____.

95. LATH AND PLASTER:

Lath and plaster details: _____; Material: _____; Thickness: _____.

96. DECORATING:

Decorating details: _____; Material: _____; Thickness: _____.

97. INTERIOR DOORS AND TRIM:

Interior doors and trim details: _____; Material: _____; Thickness: _____.

98. WINDOWS:

Window details: _____; Material: _____; Thickness: _____.

99. ENTRANCES AND EXTERIOR DETAIL:

Entrances and exterior detail details: _____; Material: _____; Thickness: _____.

100. CABINETS AND INTERIOR DETAIL:

Cabinets and interior detail details: _____; Material: _____; Thickness: _____.

101. MECHANICALS:

Mechanicals details: _____; Material: _____; Thickness: _____.

102. STAIRS:

Stairs details: _____; Material: _____; Thickness: _____.

103. SPECIAL FLOORS AND MAINSCOT:

Special floors and mairnscoat details: _____; Material: _____; Thickness: _____.

104. PLUMBING:

Plumbing details: _____; Material: _____; Thickness: _____.

105. HEATING, CONSULT LOCAL MECHANICAL ENGINEER:

Heating details: _____; Material: _____; Thickness: _____.

106. LIGHTING FIXTURES:

Lighting fixtures details: _____; Material: _____; Thickness: _____.

107. INSULATION:

Insulation details: _____; Material: _____; Thickness: _____.

108. MECHANICALS:

Mechanicals details: _____; Material: _____; Thickness: _____.

109. EXCAVATION:

Excavation details: _____; Material: _____; Thickness: _____.

110. FOUNDATIONS:

Foundations details: _____; Material: _____; Thickness: _____.

111. CHIMNEYS:

Chimneys details: _____; Material: _____; Thickness: _____.

112. FIREPLACES:

Fireplaces details: _____; Material: _____; Thickness: _____.

113. EXTERIOR WALLS:

Exterior walls details: _____; Material: _____; Thickness: _____.

114. FLOOR FRAMING:

Floor framing details: _____; Material: _____; Thickness: _____.

115. SUBFLOORING:

Subflooring details: _____; Material: _____; Thickness: _____.

116. FINISH FLOORING:

Finish flooring details: _____; Material: _____; Thickness: _____.

117. PARTITION FRAMING:

Partition framing details: _____; Material: _____; Thickness: _____.

118. CEILING FRAMING:

Ceiling framing details: _____; Material: _____; Thickness: _____.

119. ROOF FRAMING:

Roof framing details: _____; Material: _____; Thickness: _____.

120. ROOFING:

Roofing details: _____; Material: _____; Thickness: _____.

121. CUTTERS AND DOWNSPOUTS:

Cutters and downspouts details: _____; Material: _____; Thickness: _____.

122. LATH AND PLASTER:

Lath and plaster details: _____; Material: _____; Thickness: _____.

123. DECORATING:

Decorating details: _____; Material: _____; Thickness: _____.

124. INTERIOR DOORS AND TRIM:

Interior doors and trim details: _____; Material: _____; Thickness: _____.

125. WINDOWS:

Window details: _____; Material: _____; Thickness: _____.

126. ENTRANCES AND EXTERIOR DETAIL:

Entrances and exterior detail details: _____; Material: _____; Thickness: _____.

127. CABINETS AND INTERIOR DETAIL:

Cabinets and interior detail details: _____; Material: _____; Thickness: _____.

128. MECHANICALS:

Mechanicals details: _____; Material: _____; Thickness: _____.

129. STAIRS:

Stairs details: _____; Material: _____; Thickness: _____.

130. SPECIAL FLOORS AND MAINSCOT:

Special floors and mairnscoat details: _____; Material: _____; Thickness: _____.

131. PLUMBING:

Plumbing details: _____; Material: _____; Thickness: _____.

132. HEATING, CONSULT LOCAL MECHANICAL ENGINEER:

Heating details: _____; Material: _____; Thickness: _____.

133. LIGHTING FIXTURES:

Lighting fixtures details: _____; Material: _____; Thickness: _____.

134. INSULATION:

Insulation details: _____; Material: _____; Thickness: _____.

135. MECHANICALS:

Mechanicals details: _____; Material: _____; Thickness: _____.

136. EXCAVATION:

Excavation details: _____; Material: _____; Thickness: _____.

137. FOUNDATIONS:

Foundations details: _____; Material: _____; Thickness: _____.

138. CHIMNEYS:

Chimneys details: _____; Material: _____; Thickness: _____.

139. FIREPLACES:

Fireplaces details: _____; Material: _____; Thickness: _____.

140. EXTERIOR WALLS:

Exterior walls details: _____; Material: _____; Thickness: _____.

141. FLOOR FRAMING:

Floor framing details: _____; Material: _____; Thickness: _____.

142. SUBFLOORING:

Subflooring details: _____; Material: _____; Thickness: _____.

143. FINISH FLOORING:

Finish flooring details: _____; Material: _____; Thickness: _____.

144. PARTITION FRAMING:

Partition framing details: _____; Material: _____; Thickness: _____.

145. CEILING FRAMING:

Ceiling framing details: _____; Material: _____; Thickness: _____.

146. ROOF FRAMING:

Roof framing details: _____; Material: _____; Thickness: _____.

147. ROOFING:

Roofing details: _____; Material: _____; Thickness: _____.

148. CUTTERS AND DOWNSPOUTS:

Cutters and downspouts details: _____; Material: _____; Thickness: _____.

1



REVISIONS:

DRAWN:	NAME	DATE:	MON.-YR.
CHKD:	NAME		

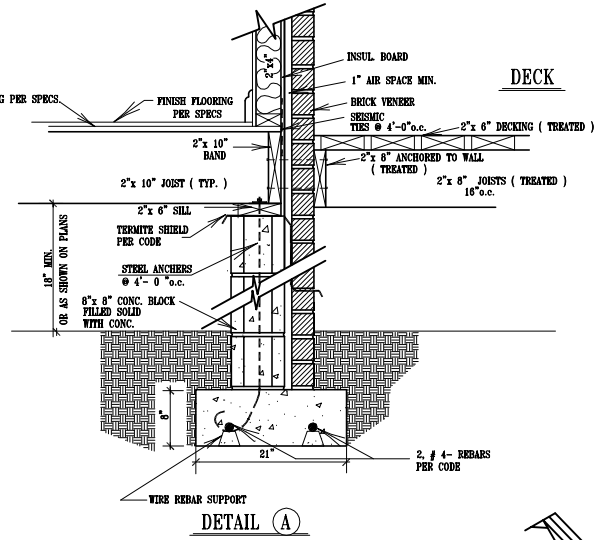
2320 Germantown Road S100
 Germantown, PA 19358
 (610) 765-8884

Sullivan & Associates
 creative concepts in home designs

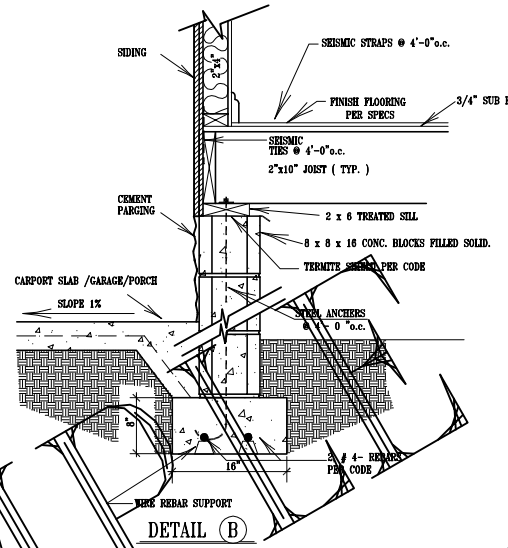


DESIGNED FOR: **WOOD FOUNDATION SYSTEMS**
 PLAN NO. **CONVENTIONAL DETAIL SHEET**

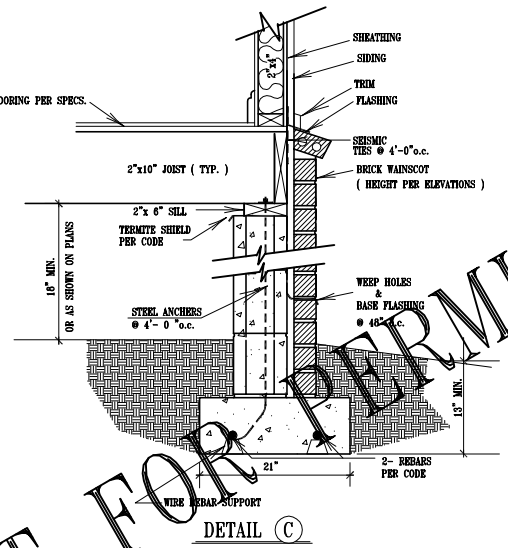
SHEET
FLY



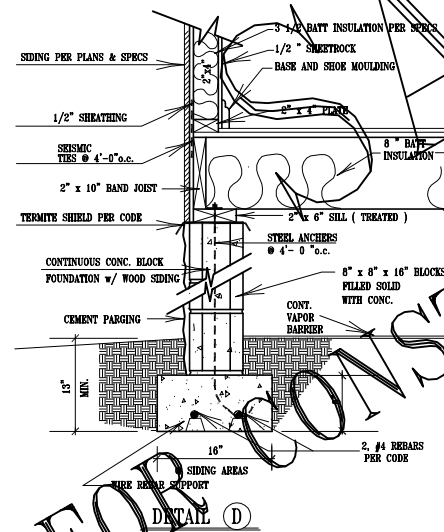
SECTION @ REAR of HOUSE & DECK (PER PLAN)



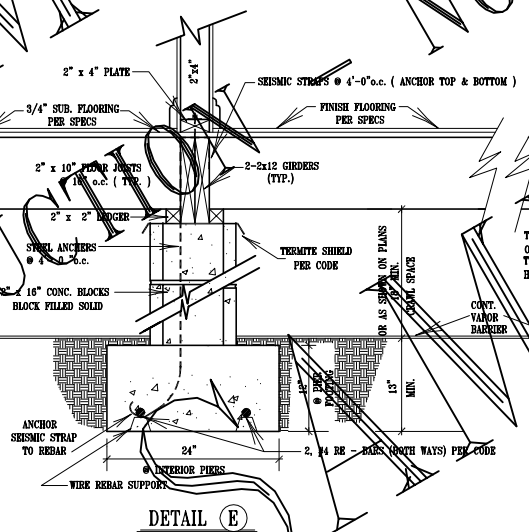
SECTION @ PORCH FOUNDATIONS (OR GARAGE)



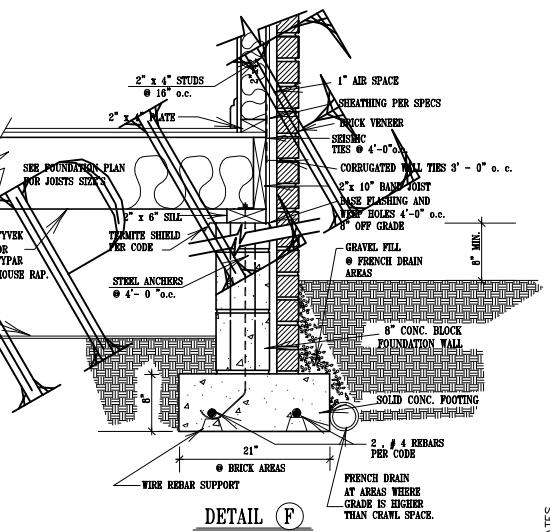
SECTION @ BRICK WAINSCOT



TYPICAL FOUNDATION @ WOOD SIDING OR STUCCO



TYPICAL INTERIOR PIER DETAIL



(TYPICAL BRICK VENEER FOUNDATIONS)

NOTE 1

REFER TO SEISMIC DETAIL SHEET FOR ADDITIONAL METAL STRAPING & METAL CONNECTIONS

SCALE: 1"=1'-0"

NOTE !! ALL DETAILS ARE TYPICAL ONLY ! REFER TO FOUNDATION PLAN FOR SIZE & SPACING !

BUILDER

NOT FOR CONSTRUCTION

NOT FOR PERMIT



REVISIONS:

CT	TMS	4-99
DRAWN:	CHKD:	DATE:

2320 Germaintown Road S100
 Plainville, CT 06061
 (860) 765-8884

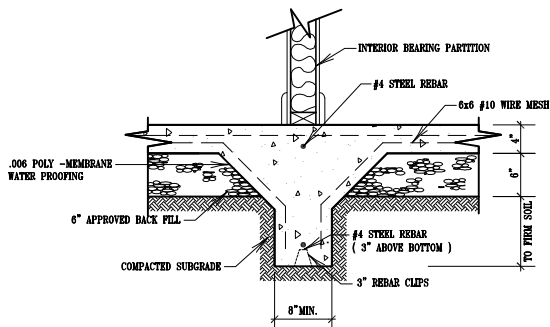
Sullivan & Associates
Sullivan
 creative concepts in home designs



DESIGNED FOR: **SEISMIC FOUNDATIONS**
 PLAN NO. **MONOLITHIC DETAIL SHEET**

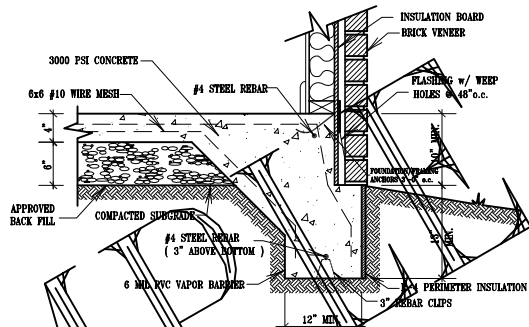
SHEET
FLY

© COPYRIGHT 1998 SULLIVAN & ASSOCIATES
 FEDERAL OFFENSE TO COPY, REDRAW, OR USE THIS DESIGN ON LOCATIONS OTHER THAN FEE PAID LOCATIONS.



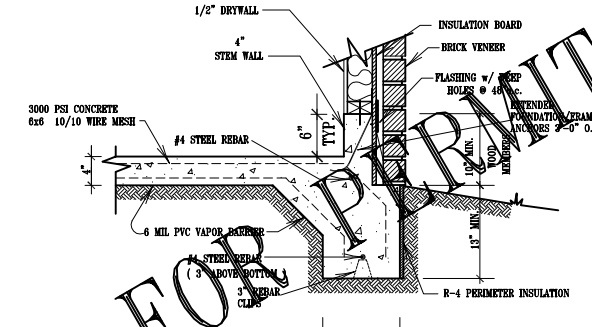
DETAIL A

TYPICAL INTERIOR LOAD BEARING GRADE BEAM



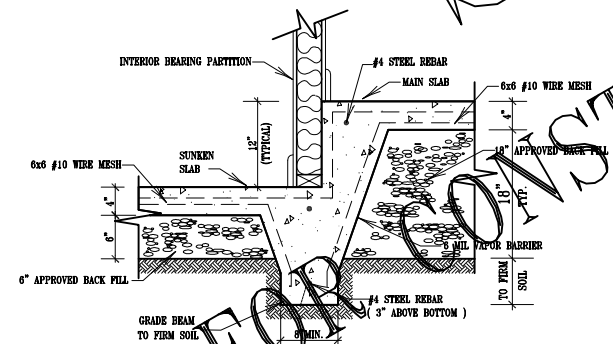
DETAIL B

HEATED EXTERIOR FOOTING w/ BRICK VENEER



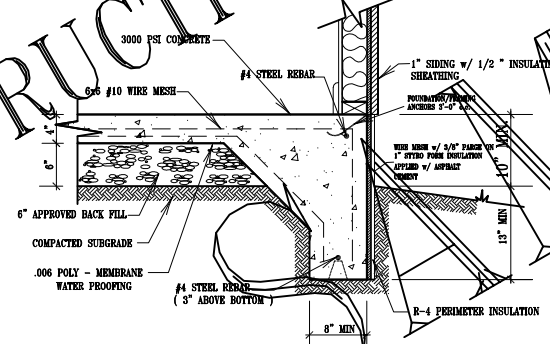
DETAIL C

GARAGE STEM WALL AREA w/ BRICK VENEER



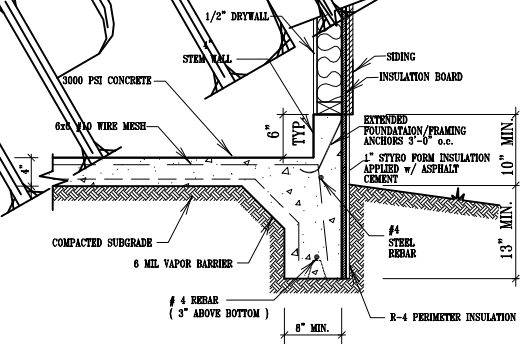
DETAIL D

TYPICAL INTERIOR SUNKEN SLAB AREA



DETAIL E

HEATED EXTERIOR FOOTING w/ SIDING



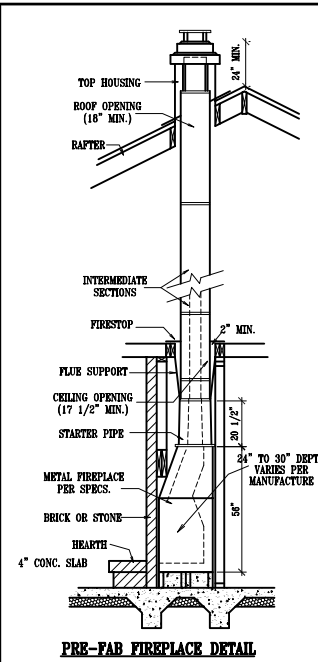
DETAIL F

GARAGE STEM WALL AREA w/ SIDING

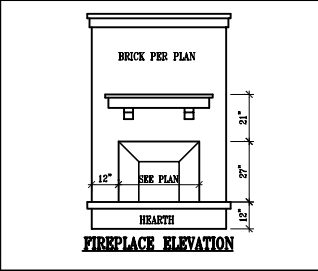
SCALE: 1"=1'-0"

MONOLITHIC DETAIL SHEET

NOT FOR CONSTRUCTION - NOT FOR PERMIT

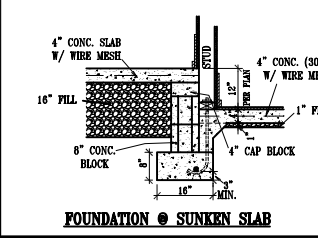


PRE-FAB FIREPLACE DETAIL



FIREPLACE ELEVATION

- NOTES**
- 1.) TIE ALL FRAMING TO FOUNDATION WITH STEEL PER CODE.
 - 2.) PLACE STEEL RE-BAR IN FOOTING PER LOCAL CODES.
 - 3.) TIE ALL RAFTERS TO PREVENT RAFTER SPREAD.



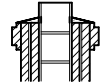
FOUNDATION @ SUNKEN SLAB

BEFORE CONSTRUCTION

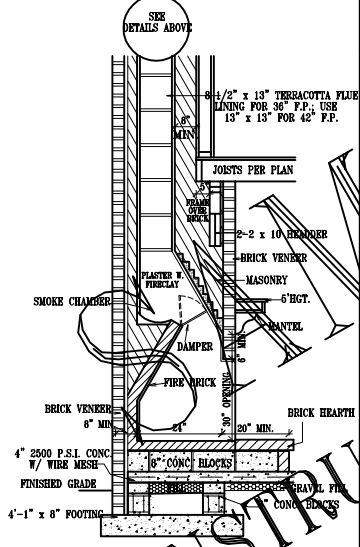
THE HOME PLANS YOU PURCHASED WERE DESIGNED TO MEET MINIMUM CODES IN THE WEST TENNESSEE AREA. WE STRONGLY RECOMMEND THAT YOU CONSULT A LOCAL ENGINEER BEFORE CONSTRUCTION. SOIL CONDITIONS, WIND LOADS, EARTHQUAKE LOADS AND TEMPERATURE CHANGES ARE JUST A FEW OF THE FACTORS THAT COULD CHANGE THE WAY THESE PLANS SHOULD BE ENGINEERED FOR YOUR AREA.



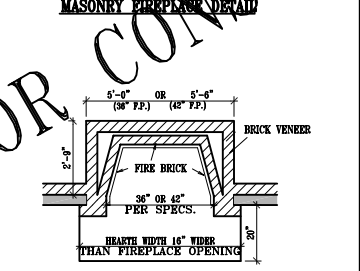
TOP VIEW



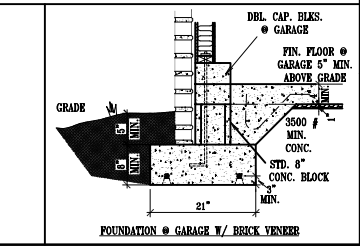
SECTION VIEW



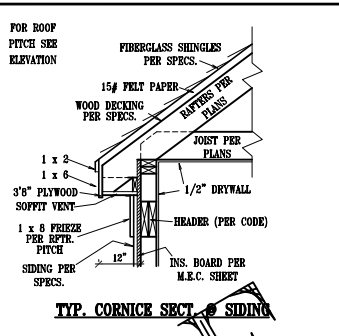
MASONRY FIREPLACE DETAIL



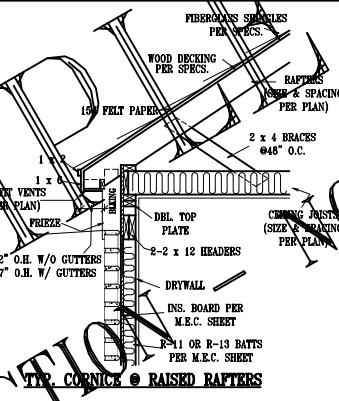
FIREPLACE CUT VIEW



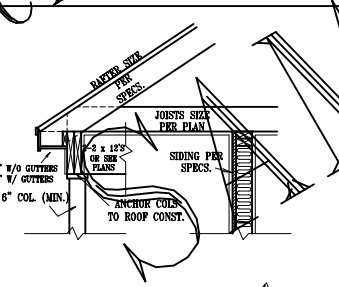
FOUNDATION @ GARAGE W/ BRICK VENEER



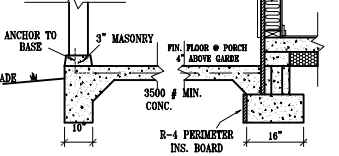
TYP. CORNICE SECT. @ SIDING



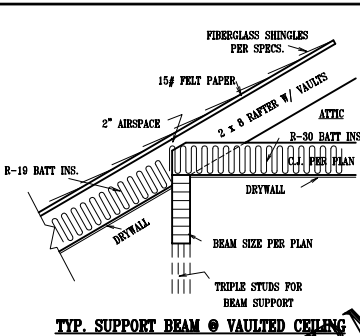
TYP. CORNICE @ RAISED RAFTERS



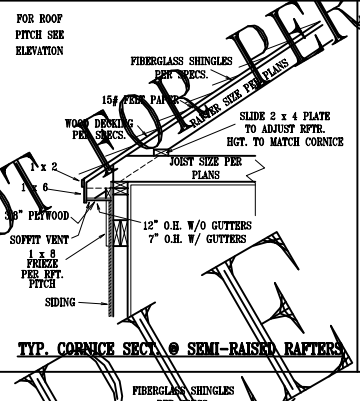
WALL SECTION @ PORCHES & CARPORTS



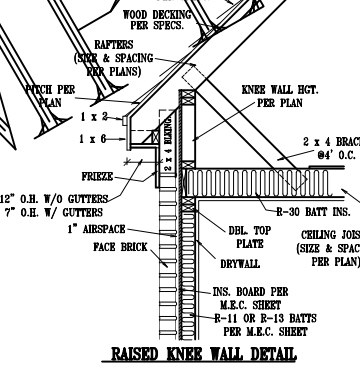
TYP. INTERIOR LOAD SUPPORT



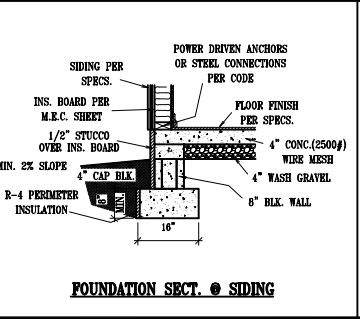
TYP. SUPPORT BEAM @ VAULTED CEILING



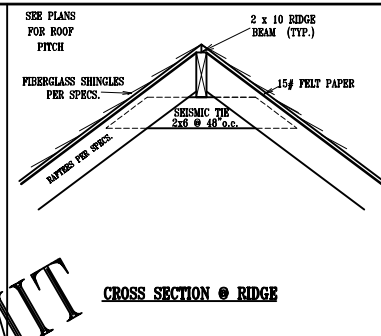
TYP. CORNICE SECT. @ SEMI-RAISED RAFTERS



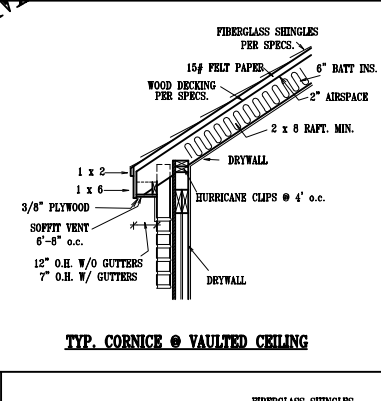
RAISED KNEE WALL DETAIL



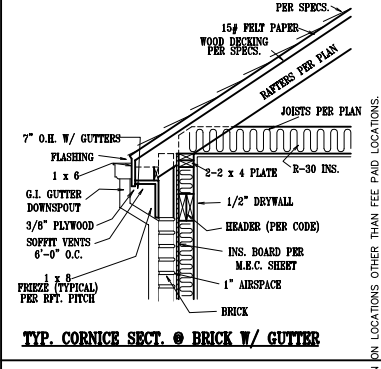
FOUNDATION SECT. @ SIDING



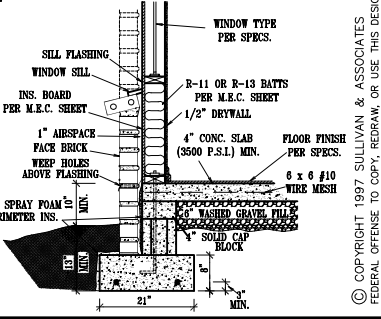
CROSS SECTION @ RIDGE



TYP. CORNICE @ VAULTED CEILING



TYP. CORNICE SECT. @ BRICK W/ GUTTER



DESIGNED FOR: **FLY**

REVISIONS:

DRAWN: **Sullivan & Associates**
 CHKD: **Sullivan & Associates**
 DATE: 10-97

2320 Germantown Road #100
 Germantown, TN 38138
 (615) 752-8884

Sullivan & Associates
 creative concepts in home designs

DETAIL SHEET

PLAN NO. _____

SHEET **FLY**